



TOWNSHIP OF LAURENTIAN VALLEY

COUNTY ROAD 51 CORRIDOR

WATER SUPPLY



TOWNSHIP OF LAURENTIAN VALLEY, THURSDAY, APRIL 11, 2002

**WATER SUPPLY
COUNTY ROAD 51 CORRIDOR**

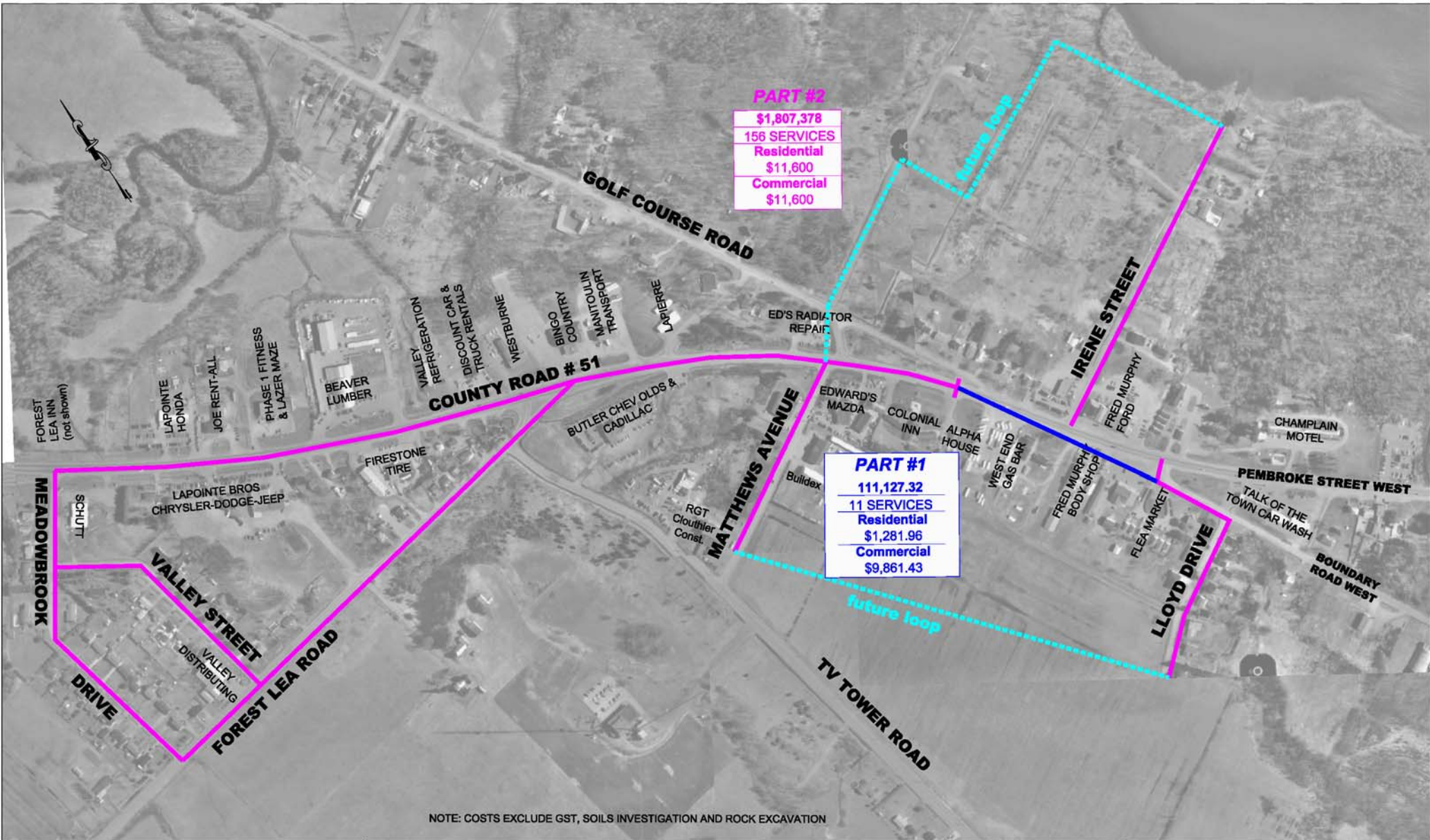
AGENDA

- A) WELCOME – Reeve**
Introduction of Council, Staff and Consultants
- B) PRESENTATION** **7:10 – 7:30**
1. OPENING REMARKS
 2. OBJECTIVES
 3. STUDY AREA LIMITS
 4. MUNICIPAL CLASS ENVIRONMENT ASSESSMENT PROCESS
 5. PART 1 STATUS
 6. PART 2 STATUS
 7. IMPACT ON RESIDENTS (WATER SUPPLY AND COST)
 8. NEXT STEPS
 9. CLOSING REMARKS
- C) QUESTION AND ANSWER PERIOD** **7:30 – 8:00**
- D) MEETING WITH PART 1 LOT OWNERS** **8:00 – 9:00**
- E) STATIC DISPLAY REVIEW** **8:00 – 9:00**

OBJECTIVES

The objectives of this public meeting are as follows:

- **Provide impacted residents with an overview of the current Water Supply Project in the County Road 51 Corridor**
- **Provide approximate costs of connection to a municipal water distribution system**
- **Allow public input on residents preferred alternative for Council consideration**



PART #2

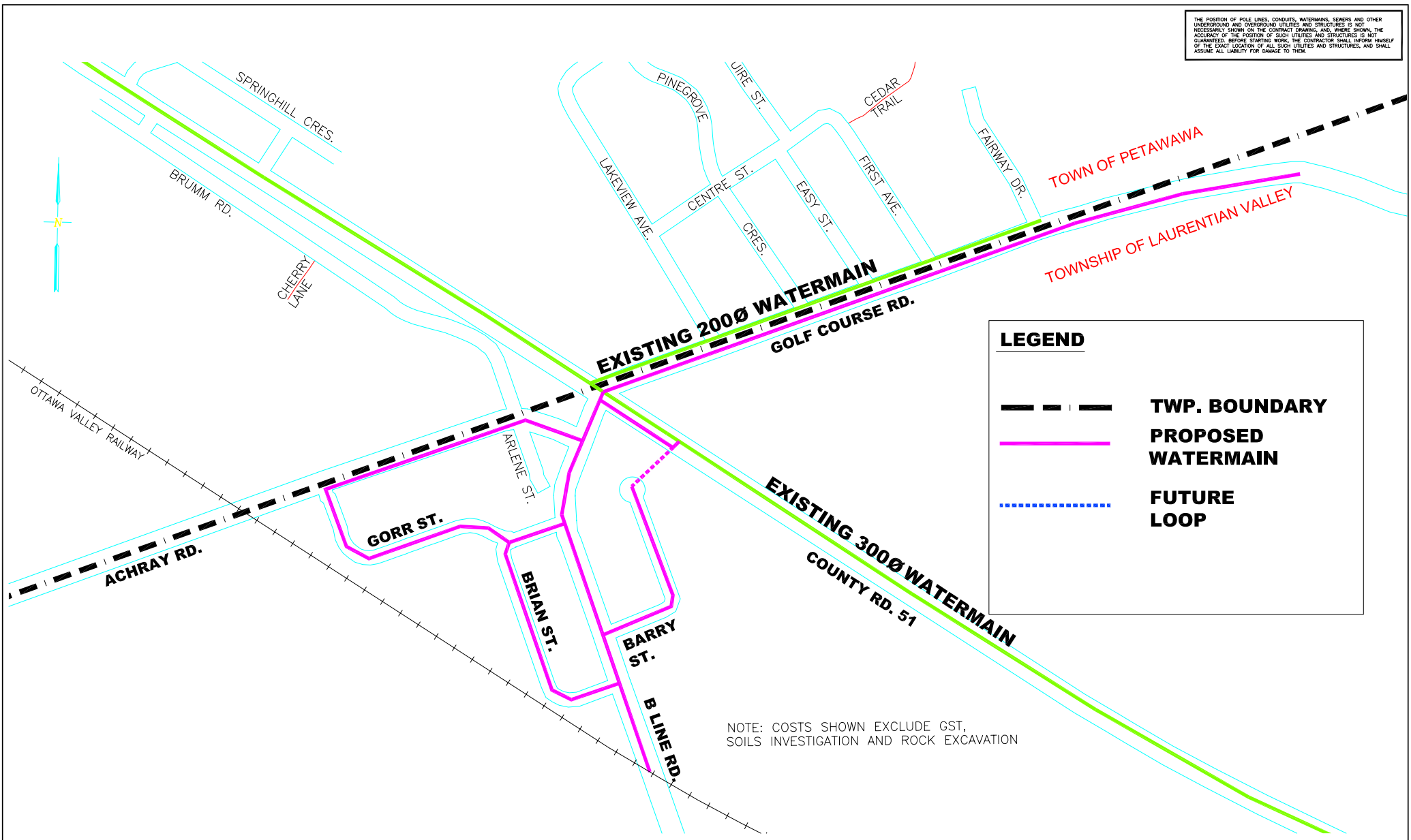
\$1,807,378
156 SERVICES
Residential
\$11,600
Commercial
\$11,600

PART #1

111,127.32
11 SERVICES
Residential
\$1,281.96
Commercial
\$9,861.43




NOTE: COSTS EXCLUDE GST, SOILS INVESTIGATION AND ROCK EXCAVATION

THE POSITION OF POLE LINES, CONDUITS, WATERMANS, SEWERS AND OTHER UNDERGROUND AND OVERGROUND UTILITIES AND STRUCTURES IS NOT NECESSARILY SHOWN ON THE CONTRACT DRAWING AND, WHERE SHOWN, THE ACCURACY OF THE POSITION OF SUCH UTILITIES AND STRUCTURES IS NOT GUARANTEED. BEFORE STARTING WORK, THE CONTRACTOR SHALL INFORM HIMSELF OF THE EXACT LOCATION OF ALL SUCH UTILITIES AND STRUCTURES, AND SHALL ASSUME ALL LIABILITY FOR DAMAGE TO THEM.

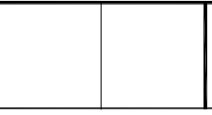


NOTE: COSTS SHOWN EXCLUDE GST, SOILS INVESTIGATION AND ROCK EXCAVATION

LEGEND

-  TWP. BOUNDARY
-  PROPOSED WATERMAIN
-  FUTURE LOOP

No.	DATE	BY	REVISIONS



Jp2g Consultants Inc.
 ENGINEERS · PLANNERS · PROJECT MANAGERS
 PEMBROKE · OTTAWA

DESIGNED	RRM
DRAWN	SPM
CHECKED	NSC
APPROVED	XXX
SCALE	1:4500

TOWNSHIP OF LAURENTIAN VALLEY
 GORR SUBDIVISION
 AREA WATERMAIN EXTENSION

DATE	AUG. 2001
PROJECT	2016070B
PLOTTED	04/11/02
DRAWING	1
FILE	ML_EXT001.dwg

MUNICIPAL CLASS EA PLANNING AND DESIGN PROCESS

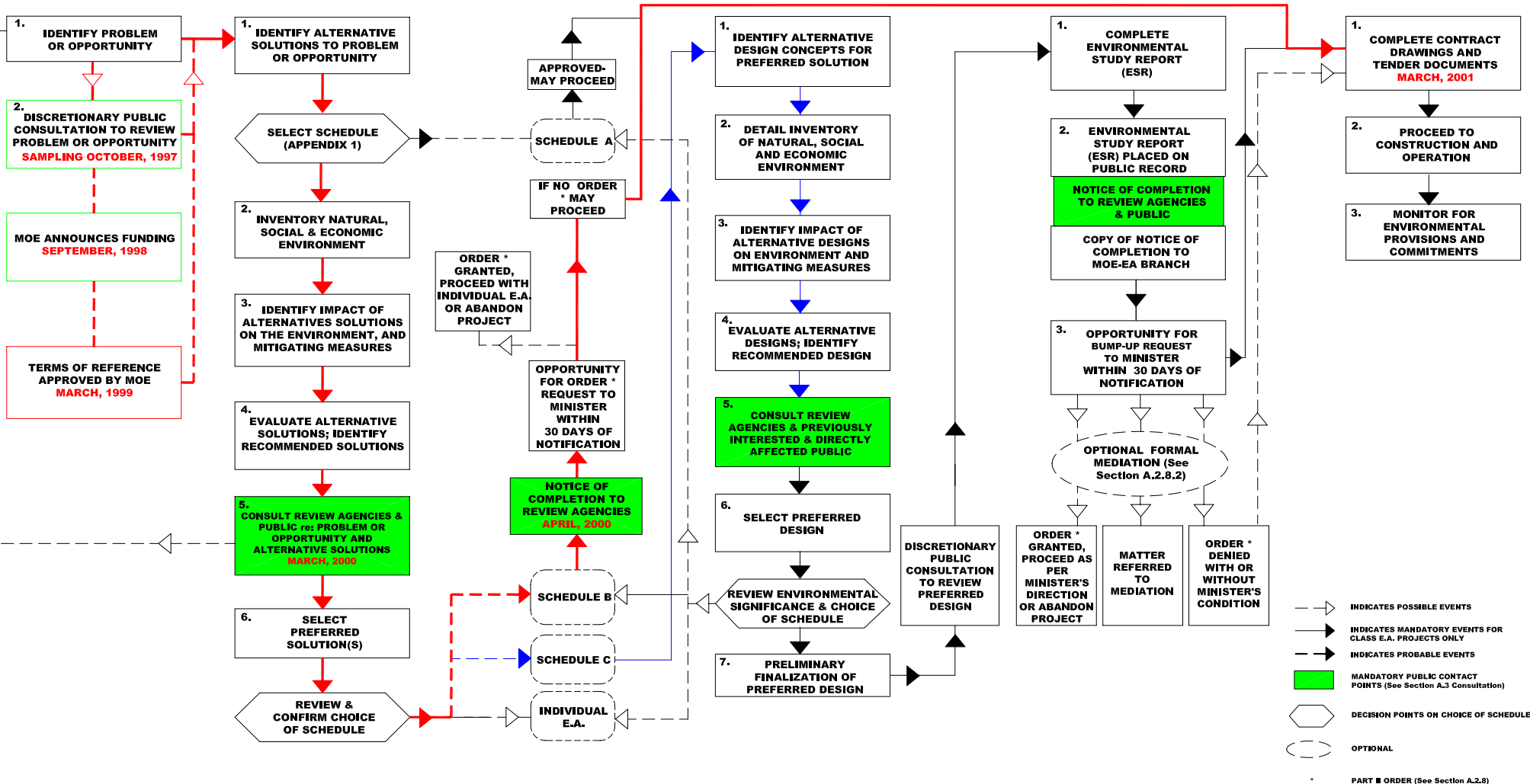
PHASE 1

PHASE 2

PHASE 3

PHASE 4

PHASE 5



→ COUNTY ROAD 51 WATERWORKS PROJECT

- INDICATES POSSIBLE EVENTS
- INDICATES MANDATORY EVENTS FOR CLASS E.A. PROJECTS ONLY
- INDICATES PROBABLE EVENTS
- MANDATORY PUBLIC CONTACT POINTS (See Section A.3 Consultation)
- DECISION POINTS ON CHOICE OF SCHEDULE
- OPTIONAL
- PART ■ ORDER (See Section A.2.8)

NOTE: THIS FLOW CHART IS TO BE READ IN CONJUNCTION WITH PART A OF THE MUNICIPAL CLASS EA.

CURRENT STATUS PART 1 AND PART 2

PHASE 1

PHASE 2

PHASE 3

PHASE 4

PHASE 5

**IDENTIFY
PROBLEM OR
OPPORTUNITY**

**IDENTIFY
ALTERNATIVE
SOLUTIONS**

**DESIGN CONCEPTS
FOR PREFERRED
SOLUTION**

**ENVIRONMENTAL
STUDY REPORT
(ESR)**

IMPLEMENTATION

Part 1

Water quality and quantity concerns
well quality testing
25 % quality
95 % aesthetic
25 % dry

- Well rehabilitation
- Piped water
- Do nothing

- Service connections
- Watermain extension
- Do nothing

Look at impact and mitigate

Construction drawings done –
Ready to Construct

1994-1997

1998

Conceptualizing, apply and funding received for residential portion

1999

Delay based on purchase option – review and select preferred

2001-2002
Finalize ESR and complete Public Meeting

2001-2002
Design and Construct

Part 2

Water quality concerns in some areas

Part 2

Part 1

Part 1

Easterly Municipal Boundary to Alpha House along County Road 51

Part 2

County Road 51 Alpha House to Petawawa limits

IMPACT ON RESIDENTS

1. WATER SUPPLY

- Health
- Safety
- Value

- 15 out of 16 exceed non-health related parameters
- 4 out of 16 exceed health related parameters
- 4 out of 16 reported dry well quantity concerns

2. COST

- Planning and Design
- Construction
(or Purchase of Watermain)
- Operation and Maintenance

Current estimate based on part experience and construction tenders received.

NOTE: The capital costs represent water servicing to municipal property limit only. Additional costs will be incurred to install water service Municipal property line to dwelling/unit, well decommissioning, and interior plumbing adjustments.....

Part 1

Residential
Commercial

\$1,281.96*
\$9,861.43

Part 2

Residential
Commercial

\$11,600
\$11,600

**Includes funding by Province*

NEXT STEPS

- **Planning Policy and Development**
- **PART 2**
 - **Consider program and potential costs**
 - **Provide direction to council for consideration on opinion to proceed or not**

CURRENT STATUS PART 1 AND PART 2

PHASE 1

PHASE 2

PHASE 3

PHASE 4

PHASE 5

**IDENTIFY
PROBLEM OR
OPPORTUNITY**

**IDENTIFY
ALTERNATIVE
SOLUTIONS**

**DESIGN CONCEPTS
FOR PREFERRED
SOLUTION**

**ENVIRONMENTAL
STUDY REPORT
(ESR)**

IMPLEMENTATION

Part 1

Water quality and quantity concerns
well quality testing
25 % quality
95 % aesthetic
25 % dry

- Well rehabilitation
- Piped water
- Do nothing

- Service connections
- Watermain extension
- Do nothing

Look at impact and mitigate

Construction drawings done –
Ready to Construct

1994-1997

1998

Conceptualizing, apply and funding received for residential portion

1999

Delay based on purchase option – review and select preferred

2001-2002
Finalize ESR and complete Public Meeting

2001-2002

Design and Construct

Part 2

Water quality concerns in some areas

Part 2

Part 1

Part 1

Easterly Municipal Boundary to Alpha House along County Road 51

Part 2

County Road 51 Alpha House to Petawawa limits

THANK YOU

QUESTION PERIOD